

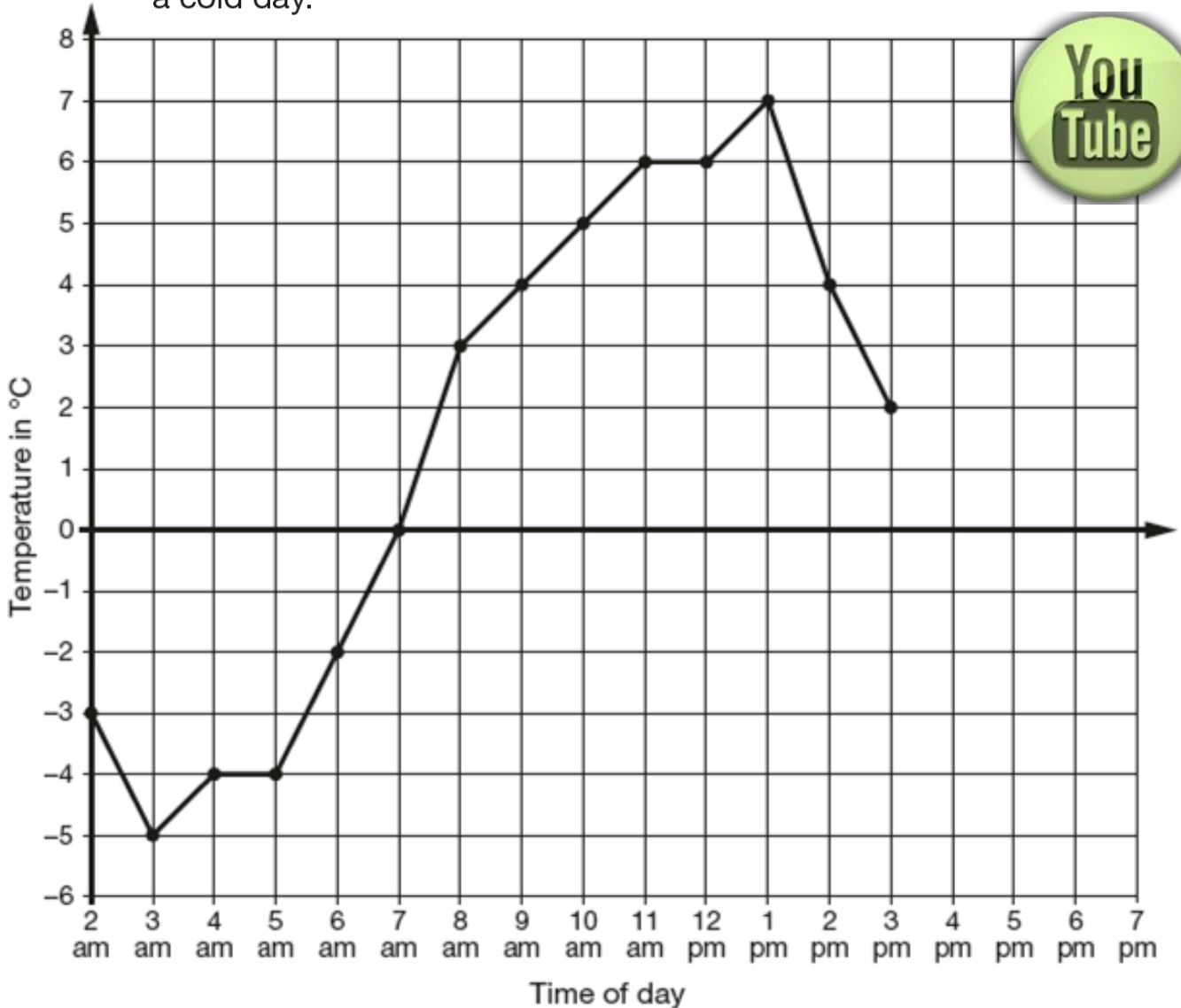


Help Code : 041

# LINE GRAPHS

4

This graph shows the temperature in °C from 2 am to 3 pm on a cold day.



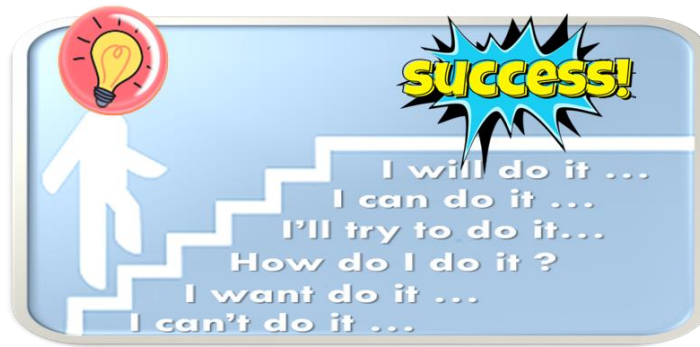
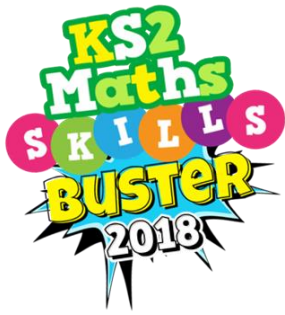
How many degrees **warmer** was it at 3 pm than at 3 am?

 °C

At 6 pm the temperature was 4 degrees lower than at 3 pm.

What was the temperature at 6 pm?

 °C



500 children started a 20 kilometre sponsored cycle ride.

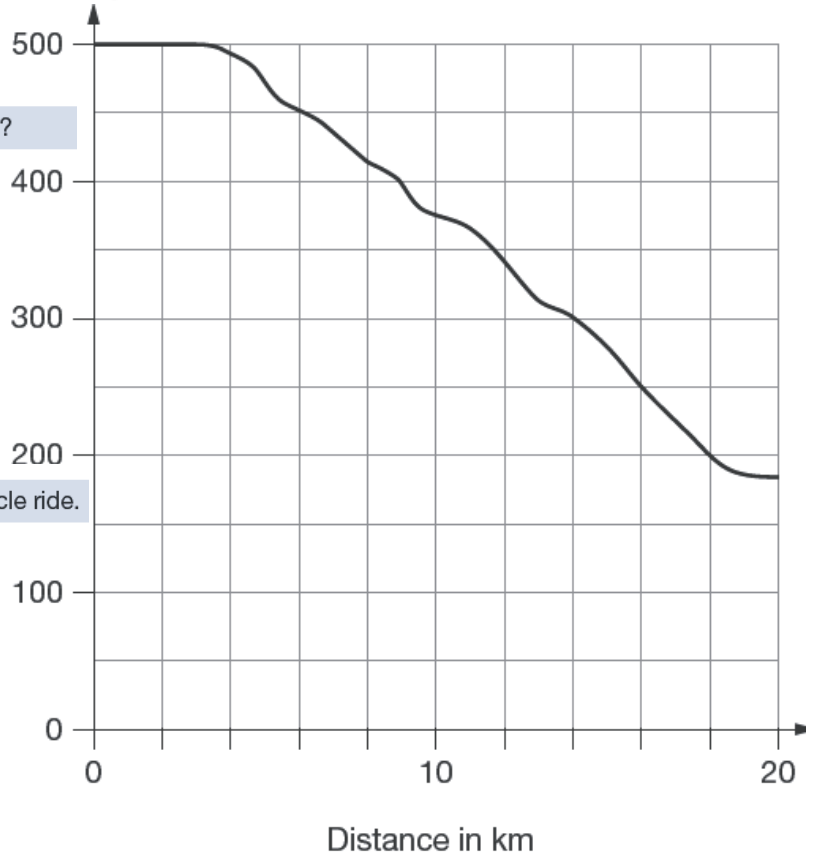
This graph shows how far they

At what distance were exactly half of the children still cycling?

km



Estimate how many children completed the 20 kilometre cycle ride.

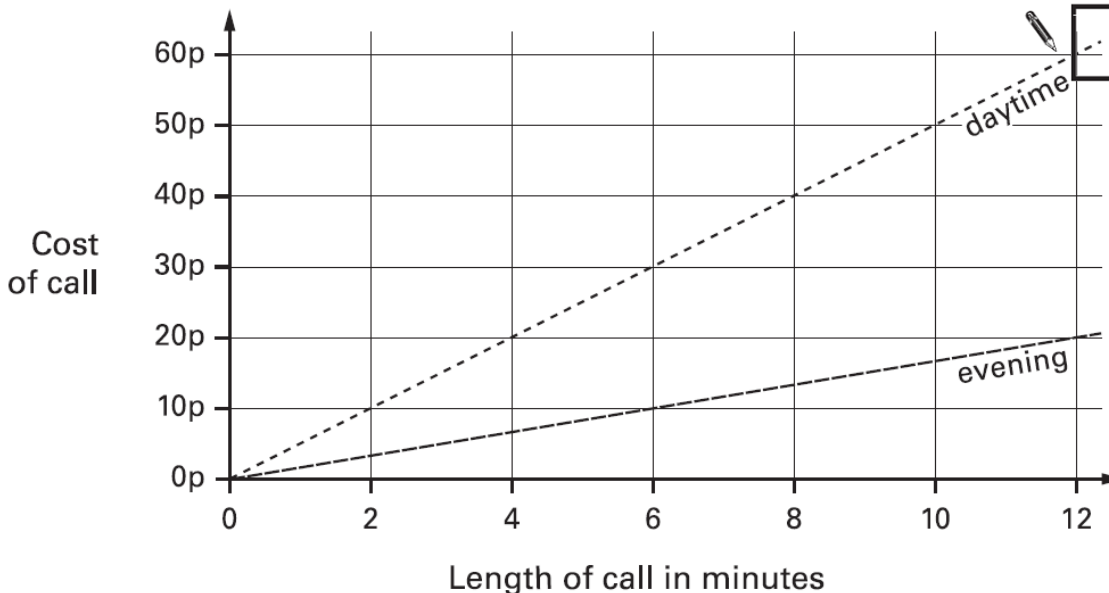


2002A KS2 Q10



This graph shows the cost of phone calls in the daytime and in the evening.

How much does it cost to make a 9 minute call in the daytime?



How much more does it cost to make a 6 minute call in the daytime than in the evening?

p

