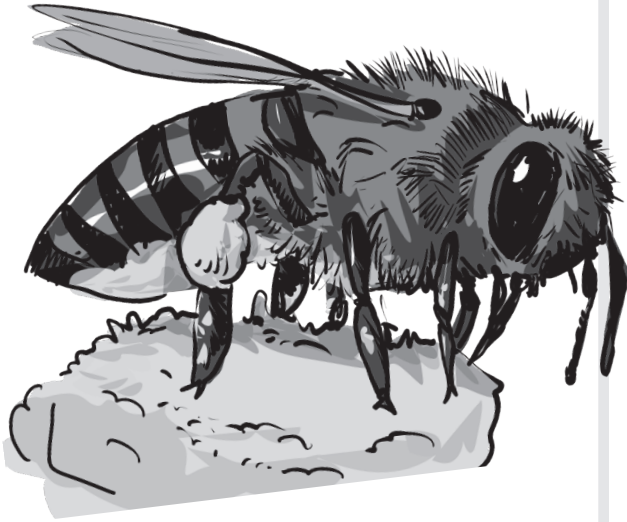


Find and copy



The Bee

Busy bee, buzzing by
Flitting from flower to flower up high
Collecting nectar with diligent care
For the hive where it will share

With wings a blur,
it dances in the sun
A pollinator's work is never done
Bringing life to meadows and trees
And asweet gift to all it sees

A bee's life is one of toil and grit
A tireless worker who never quits
A symbol of nature's harmony
And a wonder for all to see.

1 Find and copy one word which suggests that bees are persistent when collecting nectar.

diligent

1 mark

2 Find and copy one word which suggest that a bee's life is exhausting and hard work.

toil

1 mark

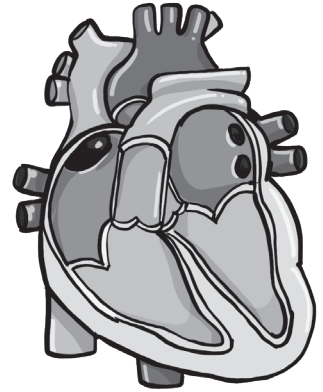
3 Find and copy one word which means the same as unity and balance.

harmony

1 mark

Our hearts

The heart is one of the most important organs in the human body. It is a muscular organ that pumps blood throughout the body, delivering oxygen and nutrients to the cells and removing waste products. The heart is located in the chest cavity, between the lungs, and is about the size of a fist.



It beats around 100,000 times a day, pumping about 2,000 gallons of blood throughout the body. The heart is made up of four chambers: the right atrium, the right ventricle, the left atrium and the left ventricle. The atria receive blood from the body and lungs, while the ventricles pump the blood back out to the body and lungs. The heart also has its own blood supply, known as the coronary arteries, which provide oxygen and nutrients to the heart muscle. Keeping your heart healthy is important for your overall health and well-being. Eating a healthy diet, staying active, not smoking and managing stress are all ways to help keep your heart in good condition.

1 Find and **copy one word** which means the same as significant?

important

1 mark

2 Find and **copy one word** which means the same as positioned.

located

1 mark

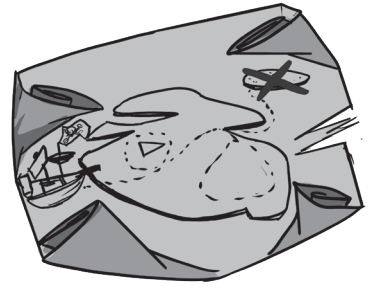
3 Find and **copy one word** which suggests that blood flows into the atria of the heart.

receive

1 mark

Treasure hunt

The sun was shining brightly as the group of friends gathered at the park. They had a special mission to accomplish today - a treasure hunt! Each of them had a piece of the map that would lead them to the hidden treasure. They eagerly put their pieces together and set off on the adventure. The clues led them on a wild goose chase around the park, through the woods, and over a bridge. At last, they found themselves standing in front of an old oak tree with a keyhole on the trunk. They quickly unlocked the tree and dug excitedly through the dirt until they found a dusty old chest. As they opened it, their eyes widened with excitement at the sight of the glittering gold and shiny jewels inside. They had found the treasure! The group jumped and cheered, thrilled with their success. As they divided the treasure amongst themselves, they knew that this would be a day they would never forget.



1 Find and **copy one word** which means the same as achieve.

accomplish

1 mark

2 Find and **copy one word** which suggests that the group of friends were keen to begin their treasure hunt.

eagerly

1 mark

3 Find and **copy a group of words** which suggests that their initial exploration was a waste of time.

a wild goose chase

1 mark

Marie Curie



Marie Curie was a Polish-born physicist and chemist who made groundbreaking contributions to the field of science. Curie moved to France to study at the Sorbonne, where she later became the first woman to receive a Nobel Prize in Physics in 1903, alongside her husband Pierre Curie, for their research on

radiation. In 1911, she became the first person ever to receive two Nobel Prizes, this time in Chemistry, for her discovery of the elements radium and polonium. Despite facing significant discrimination as a woman in the male-dominated field of science, Curie continued to make groundbreaking contributions to her field, including the development of mobile X-ray units for use on the battlefields of World War I. Her pioneering work in radioactivity and nuclear physics has had a lasting impact on science and medicine. Curie is widely considered to be one of the most influential scientists of all time and a trailblazer for women in science.

1 Find and **copy one word** which means the same as innovative.

groundbreaking

1 mark

2 Find and **copy one word** which suggests that Curie uncovered new elements.

discovery

1 mark

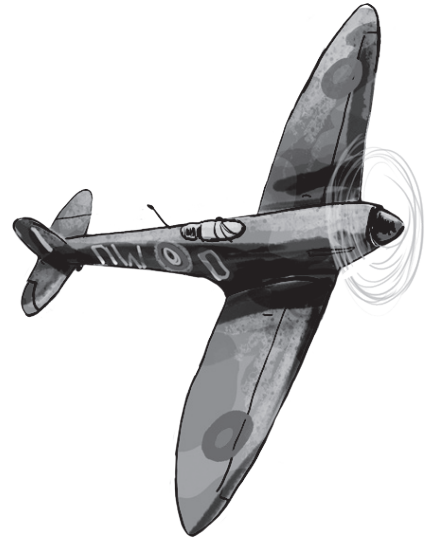
3 Find and **copy one word** which suggests that Curie was treated poorly due to her gender.

discrimination

1 mark

World War II

As the world was engulfed in the chaos and destruction of World War II, life for ordinary people was turned upside down. Cities were bombed, families were separated, and fear and uncertainty gripped the hearts of millions. Food and supplies were rationed, and people had to learn to make do with less.



Children were sent away from their homes to escape the danger of the cities, and parents were forced to say goodbye to their loved ones as they went off to fight in the war. Every day brought new challenges and hardships, but through it all, people found ways to persevere and to support one another. The war was a time of great sacrifice, but it was also a time of incredible courage and resilience.

1 Find and **copy one word** which means the same as swamped.

engulfed

1 mark

2 Find and **copy one word** which suggests that people didn't know what was going to happen.

uncertainty

1 mark

3 Find and **copy one word** which means the same as to continue.

persevere

1 mark

Endurance



Ernest Shackleton was a British explorer who is best known for his heroic leadership during an ill-fated expedition to Antarctica in 1914. Born in Ireland in 1874, Shackleton grew up with a love for adventure and exploration. He took part in several expeditions to the Arctic and the Antarctic, and in 1908, he led an expedition to within 112 miles of the South Pole.

However, it was his leadership during the Endurance expedition of 1914-1916 that cemented his legacy as one of the great explorers of his time. The expedition was plagued by a series of disasters, including the loss of their ship, the Endurance, to the ice. Despite the incredible challenges they faced, Shackleton's leadership and unwavering determination kept his team alive and brought them safely home. His leadership and courage in the face of adversity have made him an enduring symbol of exploration and perseverance.

1 Find and **copy one word** which means the same as disastrous.

ill-fated

1 mark

2 Find and **copy one word** which shows Shackleton's legacy was established firmly.

cemented

1 mark

3 Find and **copy one word** which suggests the issues faced by the Endurance expedition caused continual distress.

plagued

1 mark

The Amazon Rainforest

In the depths of the rainforest, a cacophony of animal sounds echoed through the trees. Monkeys swung from branch to branch, chattering and screeching as they went. A colourful macaw perched on a nearby tree, its feathers shimmering in the dappled sunlight. Far below, a jaguar prowled through the underbrush, its eyes flashing with a predatory glint. A family of capybaras waddled along the riverbank, while a group of tapirs snuffled through the undergrowth. It was a veritable paradise of animal life, each creature perfectly adapted to its own unique environment. And as the sun began to set and the jungle grew quiet, a symphony of insects took over, buzzing and chirping into the night. It was a never-ending cycle of life and death, a constant dance of survival that had been going on for thousands of years, and would continue long after the last human had disappeared from the earth.



- 1 Find and **copy one word** which suggests that the sounds heard in the rainforest were not harmonious.

cacophony

1 mark

- 2 Find and **copy one word** which suggests that the jaguar moved stealthily through the rainforest.

prowled

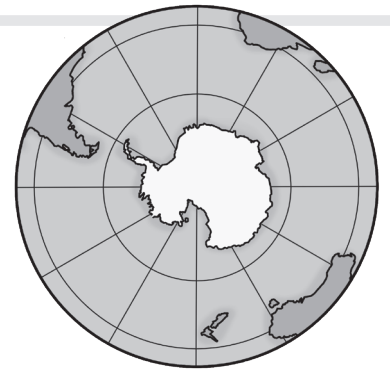
1 mark

- 3 Find and **copy one word** which means the same as unquestionable.

veritable

1 mark

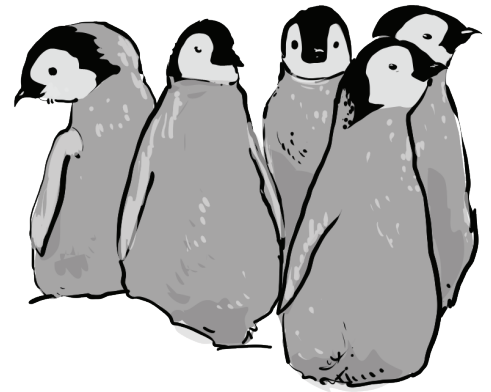
Antarctica



Antarctica is a continent located at the southernmost point of the Earth. It is the fifth-largest continent and is twice the size of Australia.

The continent is covered almost entirely by ice, with the thickest part of the ice sheet being over 4,000 meters deep. The ice sheet is home to over 70% of the world's fresh water. The continent is incredibly cold, with the average temperature being around -49°C in the winter. Antarctica is also the windiest place on Earth, with wind speeds sometimes exceeding 320 km/h.

The continent is home to a range of unique animals, such as penguins, seals, and whales, which have adapted to the extreme conditions. Despite its harsh environment, Antarctica is an important site for scientific research, with scientists from around the world studying the continent's climate, geology, and marine life.



1 Find and **copy one word** which means the same as completely.

entirely

1 mark

2 Find and **copy one word** which means the same as especially.

incredibly

1 mark

3 Find and **copy one word** which suggests that wind speeds can reach over 320km/h.

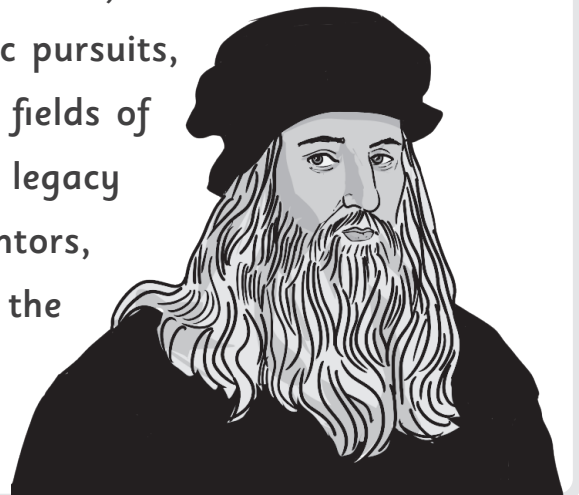
exceeding

1 mark

Leonardo da Vinci

Leonardo da Vinci was an Italian Renaissance artist, inventor, and scientist, widely considered to be one of the greatest geniuses in history. Born in 1452 in Vinci, Italy, da Vinci showed remarkable artistic talent from a young age, and went on to produce some of the most iconic works of art in history, including the Mona Lisa and The Last Supper. He was also an accomplished inventor and engineer, creating designs for machines that were centuries ahead of their time.

Da Vinci's notebooks are filled with sketches and plans for inventions such as flying machines, submarines, and tanks. In addition to his artistic and scientific pursuits, he also made significant contributions to the fields of anatomy, mathematics, and optics. Da Vinci's legacy continues to inspire and influence artists, inventors, and thinkers to this day, making him one of the most important figures in history.



- 1 **Find and copy one word** which suggest that da Vinci designed things that had never been seen before.

inventor

1 mark

- 2 **Find and copy one word** which means the same as capability.

talent

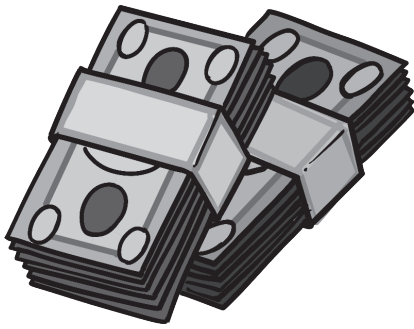
1 mark

- 3 **Find and copy one word** which suggests that da Vinci encouraged other artists and inventors.

inspire

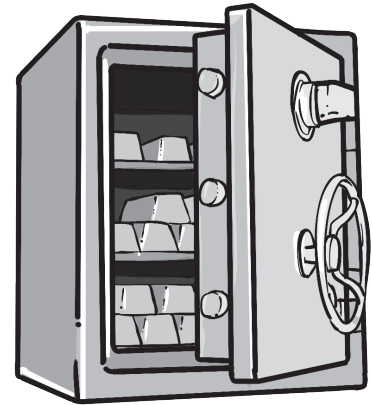
1 mark

Daylight robbery



In a daring daylight robbery, a group of armed thieves have reportedly stolen a large sum of money from a local bank. Witnesses described seeing three men, all wearing masks, storm into the bank and demand that the tellers hand over the cash.

Customers and employees were left stunned as the men proceeded to empty the bank's cash registers and vaults, stuffing the money into duffel bags before fleeing the scene in a waiting car. Police were called immediately, but by the time they arrived, the robbers had already



vanished without a trace. Authorities are urging anyone with information about the robbery to come forward and help with the investigation. In the meantime, the bank remains closed as officials assess the damage and work to ensure that its customers are protected.

1 Find and **copy one word** which suggests that the thieves had weapons.

armed

1 mark

2 Find and **copy one word** which means the same as shocked.

stunned

1 mark

3 Find and **copy one word** which means the same as disappeared.

vanished

1 mark

**Total
marks**